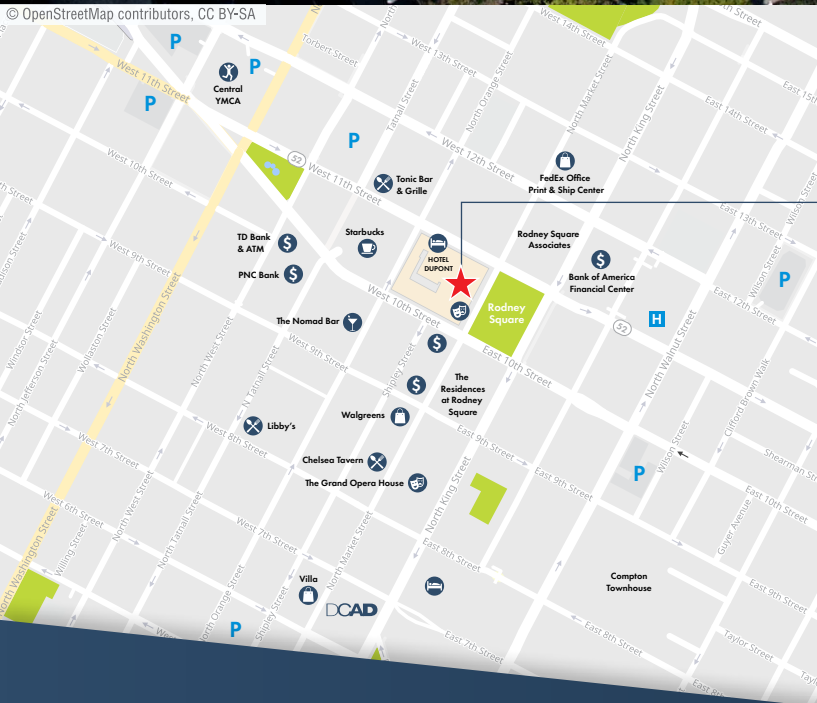


AVAILABLE

1007 N. MARKET STREET, WILMINGTON, DE 19898



© OpenStreetMap contributors, CC BY-SA



1007 N. MARKET STREET
WILMINGTON • DE

Location:

1007 N. Market Street
Wilmington, DE 19898



For more information please contact:
Kate Vaughan | 302.691.4066 | kvaughan@virtusREA.com

BUILDING AMENITIES

1007 N. Market Street



Property highlights

- Prestigious location facing Rodney Square
- 2 retail suites available on the ground floor
 - **622 RSF** interior suite facing Currie Salon at 10th Street Entrance
 - **1,686 RSF** with Rodney Square frontage and entrance & interior building entrance
- Easy access to and from I-95
- 24 hour security
- Tremendous access to downtown hotels, restaurants and retailers

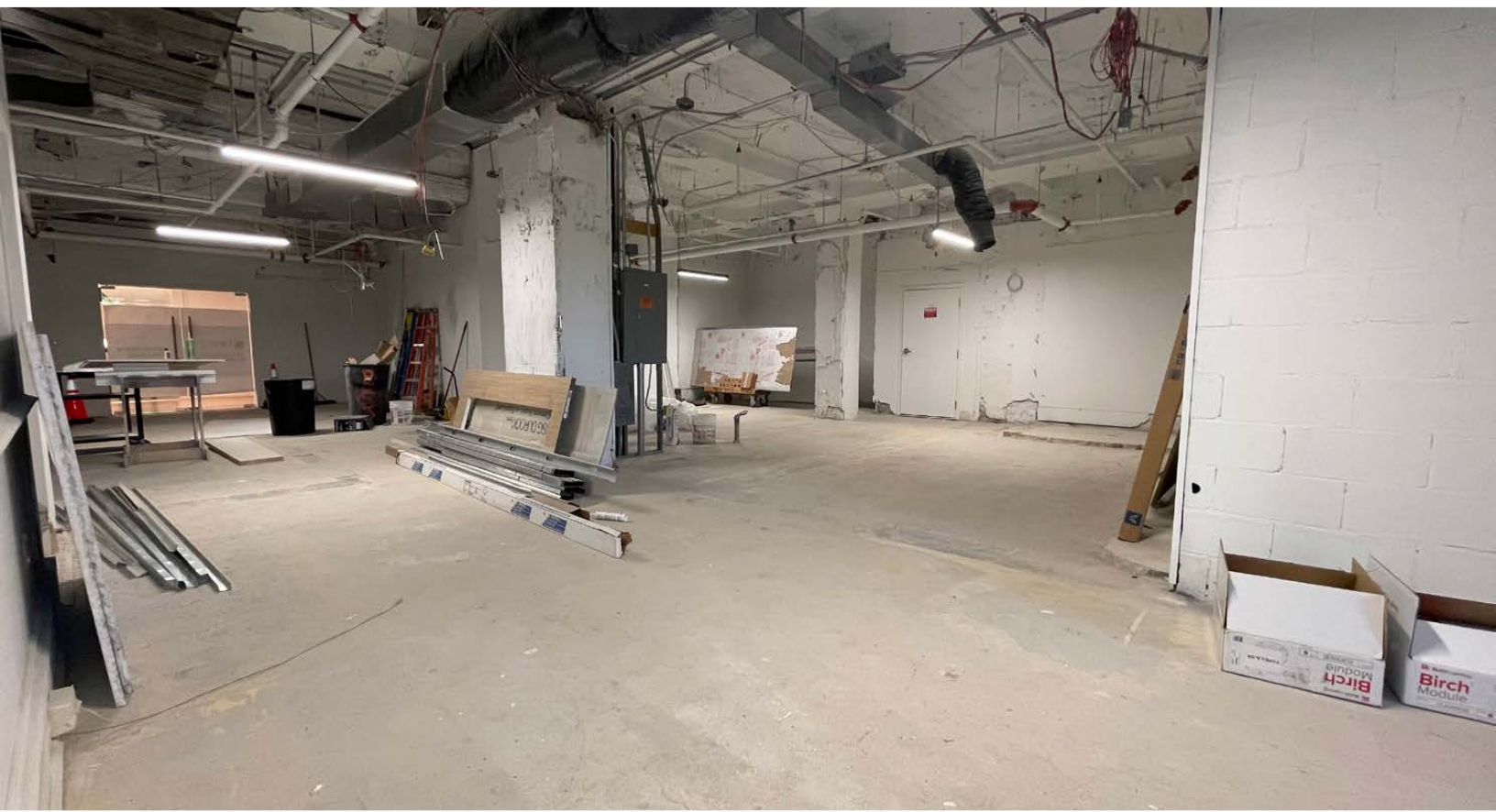
GROUND FLOOR – 622 RSF

1007 N. Market Street



GROUND FLOOR – 1,686 RSF

1007 N. Market Street



THE PREMISES

1007 N. Market Street

W 10th St

W 11th St

N Orange St

N Orange St

W 10th St

W 11th St

DE. CO



101 DUPONT PLACE



CURRIE SALON



THE PLAYHOUSE
RODNEY SQUARE



HOTEL DUPONT



ELEVATORS

622 RSF
AVAILABLE

M&T
BANK



1,686 RSF
AVAILABLE

CHEMOURS



LE CAVALIER



N Market St

N Market St

W 10th St

W 11th St

RODNEY SQUARE

GROUND FLOOR PLAN – 622 RSF

1007 N. Market Street



GROUND FLOOR PLAN – 1,686 RSF

1007 N. Market Street



